

What are your Albany D.C.P. surveys?



Environmental Services Ltd

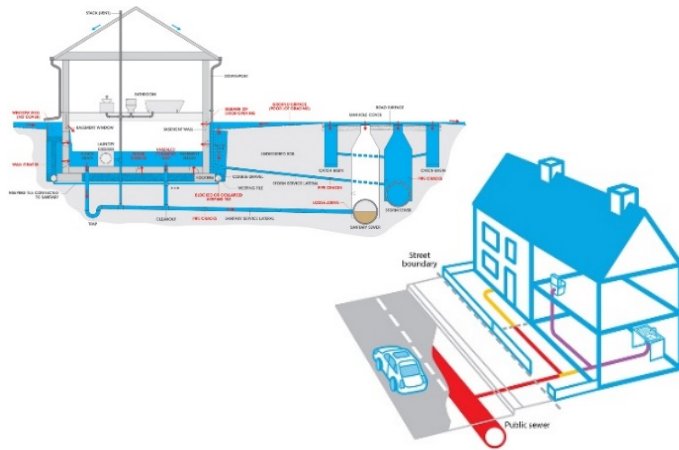
Our rat surveys are a combined DRAINAGE, PEST CONTROL & CONSTRUCTION survey.

The 3x considerations that must all be evaluated to be able to fully understand and successfully diagnose rat entry into building fabrics.

DRAINAGE

We will not only inspect all inlets and manholes within your property confines, but also map the drainage from the waste and surface water systems, including the drainpipes.

Our surveyors are well versed in all drainage aspects and differing adaptations which might have changed over the years. A map will be drawn up showing which inlet joins to what and goes where, so you will have a full understanding of your drainage system.

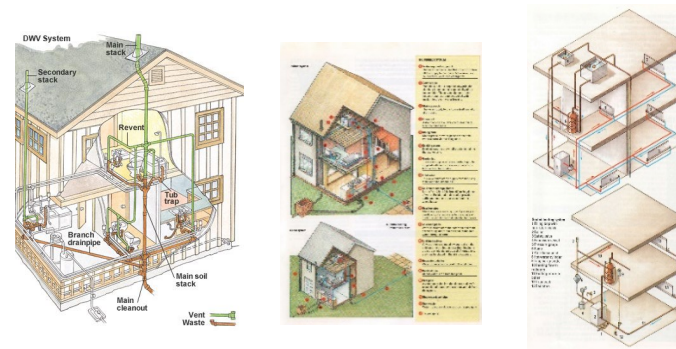


CONSTRUCTION

We understand the basic differences between Victorian/Edwardian, 1930's and 1960's properties in terms of foundation make up, foundation depth, wall cavity or no wall cavity, dirt foundations or concrete oversite, enclosed or external soil vent pipe, block & beam, slab or suspended floor and combined or separate drainage.

Understanding how buildings are built and (more importantly) how modern builders change them when extensions are added is a vital component in understanding how rats are able to enter and spread through them.

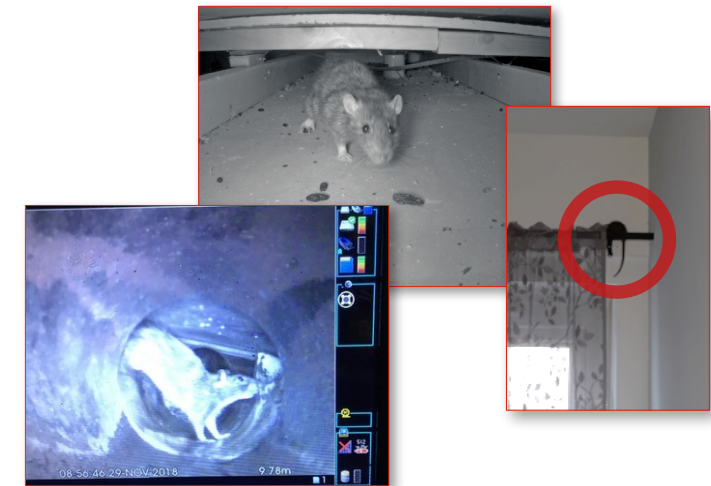
Some entry points are above ground so this always needs to be evaluated - drainage is not always to blame!



PEST CONTROL

All surveyors are pest controllers at heart and have many years of field experience in the area, so they have an excellent understanding of rat behaviour and capability.

Each survey takes around 2 hours to complete and we'll never submit a report saying 'we've no idea', so we will always be able to find how they are getting in and make recommendations around this.



What can i expect on the day of my survey?

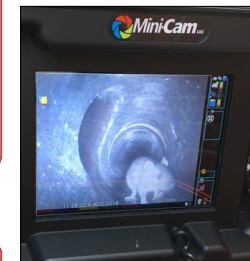


Environmental Services Ltd



On completion of the survey, we can demonstrate the drainage defects which may be present and explain what we would recommend to resolve the problem.

The surveyors will carry examples of different valves on the market and actual sections of drainage likely to be present underground. They can offer on site advice and recommendations to precede the full report and remedial works which will be emailed across after scrutiny from a Director. We can even send you a copy of the drainage video or stills taken whilst the investigation was carried out.

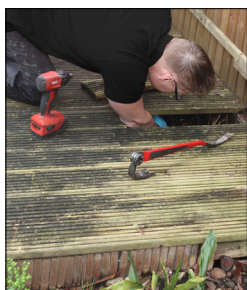
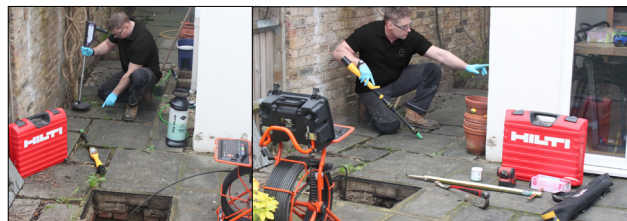


Drain Camera: Minicam SoloPro Plus 40 Metres

Top of the range equipment and the same used by Thames Water/Lanes for drains. Enables us to see drain internals with absolute clarity thereby enabling our surveyors to find the subtle defects that others miss and which ultimately allow rats to emerge.

Sonde:

Each surveyor will carry a sonde which allow them to map any redundant inlets or points of interest within the drainage using self-contained transmitters to pin point their exact location underground and therefore negating the requirement for excavation.



Hilti Tools:

These ensure that all other aspects of identifying possible points of ingress/egress can be identified when the surveyors diagnose the route cause of rodent entry.

The surveyors can lift decking, remove vents, inspect cellars, access lofts and get to all places which may have been overlooked by previous contractors who did not have the correct/appropriate tools required to overcome obstacles.



Manhole Lifters:

Each surveyor has an array of specialist manhole lifters meaning they can access virtually any manhole covering your drainage network – whether the manhole cover be internal or external, recessed or surface mounted, traditional cast iron or modern fitments.



Dye Testing:

This allows the surveyors to map which drain inlet services what aspect of the drainage. This also allows suspected redundant inlets to be proved at drain level.

The dye testing also allows surveyors to check burrow points to confirm whether these feed back to the drain network and check all other surface inlets are connected to the drain system.

Despite the lurid colours, our dye is non-toxic and washes away with the drain fluids or rainwater on survey completion. Most other drainage companies do not use this form of testing.

